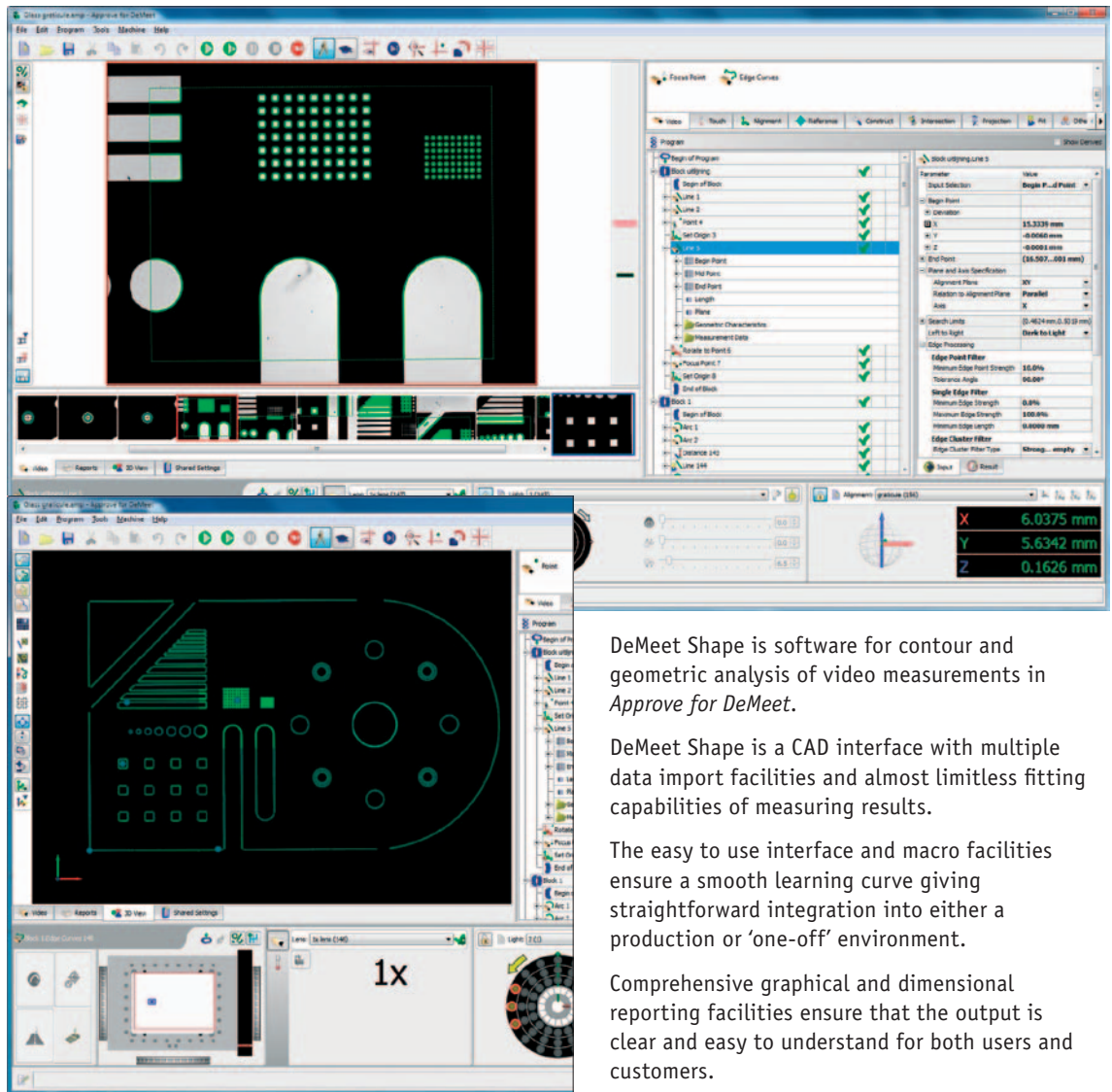


DeMeet Shape



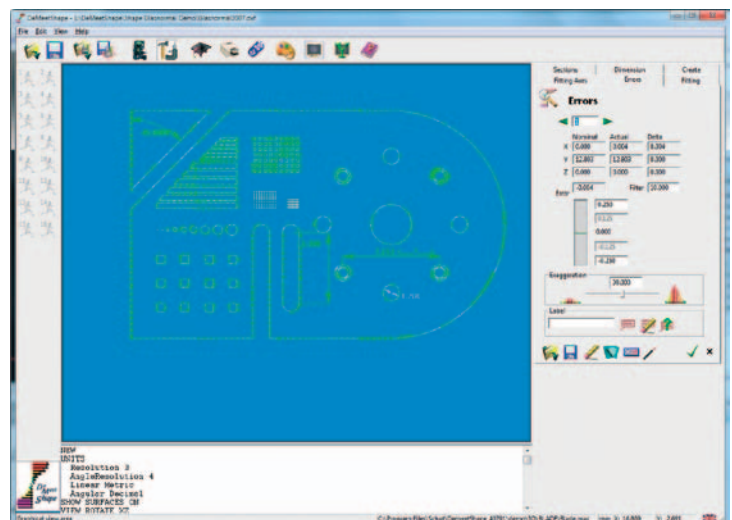
DeMeet Shape is software for contour and geometric analysis of video measurements in *Approve for DeMeet*.

DeMeet Shape is a CAD interface with multiple data import facilities and almost limitless fitting capabilities of measuring results.

The easy to use interface and macro facilities ensure a smooth learning curve giving straightforward integration into either a production or 'one-off' environment.

Comprehensive graphical and dimensional reporting facilities ensure that the output is clear and easy to understand for both users and customers.

Right hand dialogue boxes with large clear icons, and tabs for changing from one to another, give easy access for dimensioning, creating templates, error customization, fitting and sectional analysis. The Dimension tab allows linear dimensions in either axis or a combination of both, as well as radial diameter and angular dimensions, with tolerancing facilities and the flexibility to customize the graphical representation.



DeMeet Shape

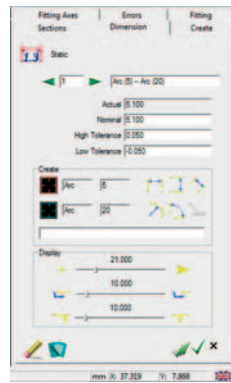
DeMeet Shape can:

- Compare Measured Data to Nominal Form
- Fit Data to a Template
- Create Template from Data
- Fit to Specific Features
- Fit with Constrained Degrees of Freedom
- Fit to Any Alignment
- Fit using Different Methods
- Generate Conditional Reports

DeMeet Shape has:

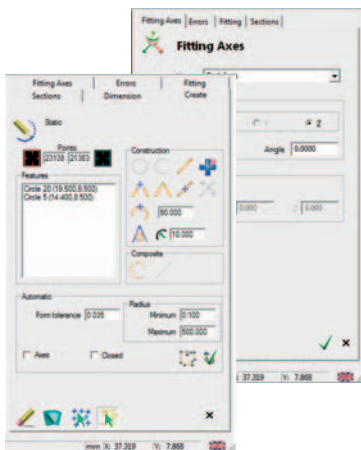
- Easy to Use Interface
- Multiple Cad Formats
- Multiple Data Formats
- Comprehensive Macro Language
- Report Customization
- Full Dimensioning Facility
- Run-time Switchable languages
- Independent Axis Scaling

Dimension



The Dimension tab allows linear dimensions in either axis or a combination of both, as well as radial diameter and angular dimensions, with tolerancing facilities and the flexibility to customise the graphical representation.

Create and Fitting Axes



The Create tab gives the ability to make a template of geometric features from measured data. Combined with the ability to edit these features to give many of the capabilities of a 2D CAD system.

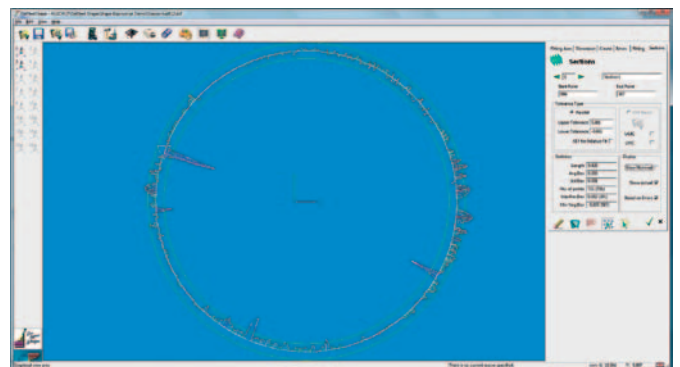
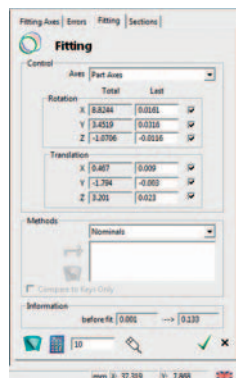
Errors and Sections

The Errors and Section tabs ensure the operator has all of the tools required to give a comprehensive and meaningful graphical output. A 3-button mouse gives access to dynamic screen manipulation (Zoom and Rotate) as well as a 'right-click' facility for turning on or off the various elements of the graphical display.



Fitting

Fitting of data points to a CAD template can be done by various methods, from simple fitting to 'nominals' through fitting to maximum or minimum material condition, to 'tolerance zone' fitting where constantly changing tolerances from 2 CAD files can be used. There is also the capability to constrain the degrees of freedom that are permitted within the fitting routines.



DeMeet Shape software modules

Item no.	Description
480.280	AfDM Shape incl. DXF-im/ex
480.281	Iges Import AfDM Shape (3202)
480.282	VDA Import AfDM Shape (3203)
480.273	Upgrade Contour -> AfDM Shape
480.284	AfDM Shape Dongle upg. LPT -> USB

Technical Specifications

For specifications refer to our website Schut.com.



DeMeet



Schut Geometrische Meettechniek bv (Schut Geometrical Metrology)
 Duinkerkenstraat 21, 9723 BN Groningen
 P.O. Box 5225, 9700 GE Groningen
 The Netherlands
 Tel: +31 (0)50 5 877 877
 Fax: +31 (0)50 5 877 899
 E-mail: SchutNL@Schut.com

ISO 9001