



# Measuring Supports and Auxiliary Equipment



*TESA measuring supports have been designed to offer the best holding stability for instruments such as dial gauges, lever dial test indicators and probes. Stability is the prime requirement needed to reduce the related uncertainties in a measurement method or set-up.*





**A** Base with vee recess and 1 magnetic flat face. Disengageable of magnet possible. Duralumin articulations.



Dovetail clamp with a Ø 8 mm clamping bore



0,4 kg



Supplied without indicator



Transport packing

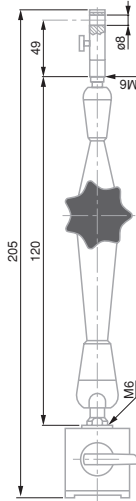


Declaration of conformity

## UNIVERSAL SUPPORTS

Magnetic measuring support with suction base or articulated arm.

### INTERAPID Magnetic Support with Articulated Arm (small)



Magnetic support with articulated arm

No	=	N	H mm	L mm	Base mm	Consisting of:
01639025	Small magnetic measuring stand with articulated arm	≈ 170	205	120	30 x 30 x 30	<ul style="list-style-type: none"> <li>- 1 articulated arm length 120 mm</li> <li>- 1 dovetail clamp with fine adjustment</li> <li>- 1 magnetic base 30 x 30 x 30 (L x W x H)</li> </ul>



**A** Magnetic base has 1 prismatic and 2 flat faces. Articulations made from duralumin. Disengageable permanent magnet. Dovetail clamp with a Ø 8 mm clamping bore.



Supplied without measuring instrument



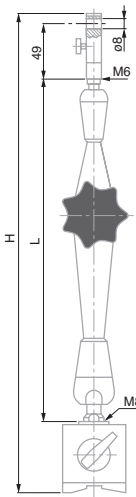
Suitable transport packing



Declaration of conformity

### INTERAPID Magnetic Support with Articulated Arm

Simple and secure locking using a single rotating knob  
- highly rigid arm and articulation.



Magnetic support with articulated arm

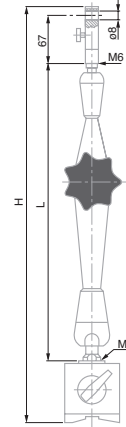
No	=	N	V-Base for Ø, mm	Fine adjust	H mm	L mm	Base mm	Mass kg	Consisting of:
01639022	INTERAPID magnetic support with articulated arm	≈ 800	30 ÷ 150	●	310	200	60 x 50 x 55	1,45	<ul style="list-style-type: none"> <li>- Articulated arm</li> <li>- Clamp</li> <li>- Magnetic base</li> </ul>
01639023	INTERAPID magnetic support with articulated arm	≈ 800	30 ÷ 150	●	390	280	60 x 50 x 55	1,85	<ul style="list-style-type: none"> <li>- Articulated arm</li> <li>- Clamp</li> <li>- Magnetic base</li> </ul>



## INTERAPID Magnetic Support with High Precision Articulated Arm

Magnetic support with high precision articulated arm and fine adjustment for measurements that need repeatability in the range of  $\mu\text{m}$ .

Simple and secure locking with a two-position knob. Highly rigid arm and articulation.



Magnetic support with high precision articulated arm



Magnetic base has 1 prismatic and 2 flat faces. Articulations made from duralumin. Disengageable permanent magnet. Dovetail clamp with a  $\varnothing 8$  mm clamping bore.



Supplied without measuring instrument



Suitable transport case

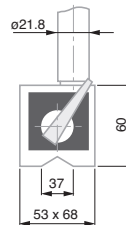


Declaration of conformity

No	=	Hand icon	V-Base for $\varnothing$ , mm	Fine adjust	H mm	L mm	Base mm	Consisting of:
01639053	INTERAPID High Precision Magnetic Support with Articulated Arm	$\approx 1000$	$30 \div 150$	●	440	320	73 x 50 x 55	<ul style="list-style-type: none"> <li>- Articulated Arm</li> <li>- Clamp</li> <li>- Magnetic base</li> </ul>

## INTERAPID Magnetic Support with Flexible Arm

For measurements in hard to reach locations. Instant and reliable locking through lever control.



01639020 Magnetic Support with Flexible Arm



Holding force on a flat surface  $\approx 1000$  N



The magnetic base has 1 prismatic and 2 flat faces. Disengageable permanent magnet. Full length 350 mm. Dovetail clamp with an  $\varnothing 8$  mm clamping bore.



Supplied without measuring instrument



Suitable transport packing



Declaration of conformity



**A** Switchable magnet. Clamp with Ø 8 mm clamping bore

Supplied without measuring instrument

Suitable transport packing

Declaration of conformity

## INTERAPID Inclinable Magnetic Support

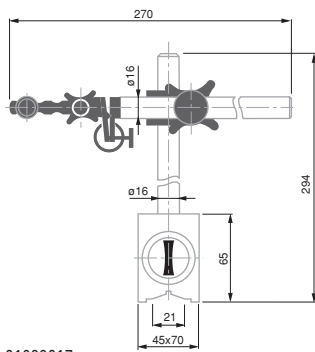
Standard model and models with strong holding force



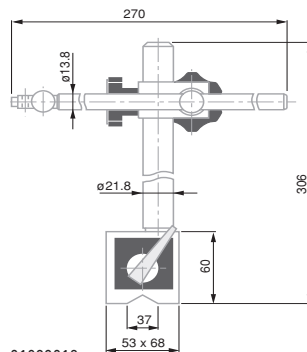
01639017



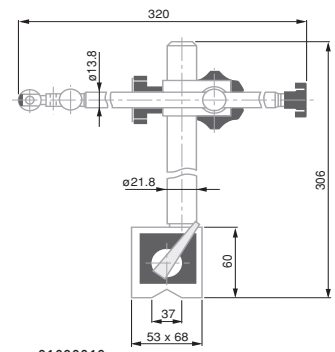
01639019



01639017



01639018



01639019



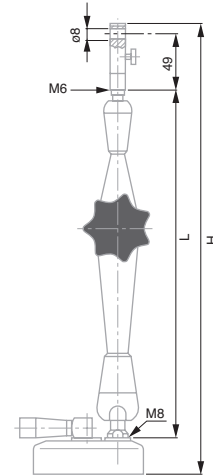
No	=	N	V-Base for Ø, mm	A	Fine adjust
01639017	INTERAPID magnetic support with V-base, 600 N	≈ 600	70 ÷ 220	Standard Version	●
01639018	INTERAPID magnetic support with V-base, 1000 N	≈ 1000	70 ÷ 220	Strong magnetic holding force	–
01639019	INTERAPID magnetic support with V-base, 1000 N	≈ 1000	70 ÷ 220	Strong magnetic holding force	●



## INTERAPID Support with Suction Base and Articulated Arm

Holds firmly on any smooth and flat surface

- Clamps instantly and reliably using a suction lever switch.
- Highly rigid articulated arm.
- Free from magnetic fields.



Round suction base made of aluminium (Ø 88 mm, height 28 mm) with flat suction base. Articulations made from duralumin. Suction controlled by lever switch. Dovetail clamp with an Ø 8 mm clamping bore.



1.1 kg



Supplied without measuring instrument



Suitable transport packing



Declaration of conformity



N



Fine adjustment



H, mm



L, mm



Consisting of:

01639024

INTERAPID Measuring support with suction base and articulated arm

≈ 400

●

363

280

- Articulated arm
- Fine adjust clamp
- Round suction base





Measuring table and column in hardened steel.



Measuring arm with  $\varnothing 8$  mm clamping bore, without fine adjustment. Measuring span: 48 mm.



2,7 kg



Supplied without measuring instrument



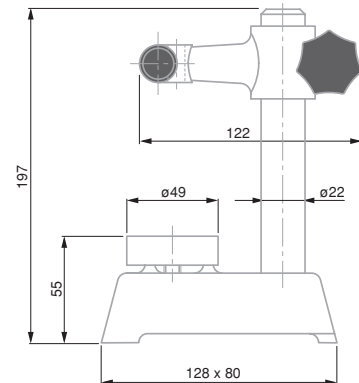
Suitable transport packing



Declaration of conformity

## INTERAPID Small Measuring Support and Table $\varnothing 49$ mm

Round steel measuring table



Application example with DIGICO indicator



mm  
0 ÷ 100



mm  
49

01639006 INTERAPID small support with  $\varnothing 49$  mm measuring table

## INTERAPID Measuring Support with Inclined Frontal Arm



Cast iron base



Base with front support face. Clamp for  $\varnothing 8$  mm mounting rod or dial gauge with lug back. Model No 01639003 also with dovetail clamp.



1,3 kg (01639003)  
4,35 kg (01639004)



Supplied without dial gauge



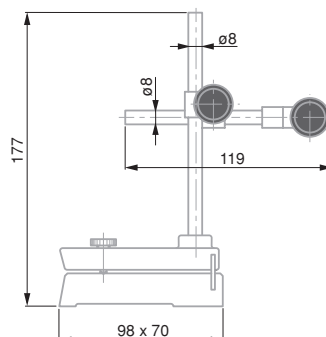
Packed suitable for transport



Declaration of conformity



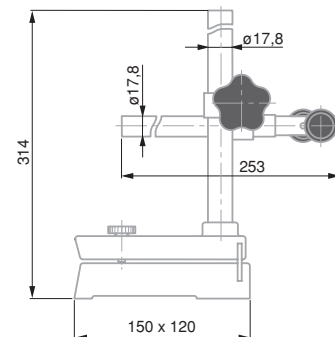
01639003



01939003



01639004



01939004



Used in conjunction with:

01639003 INTERAPID Measuring Support with Inclined Frontal Arm H = 177 mm

Lever dial test indicators, small dial gauges

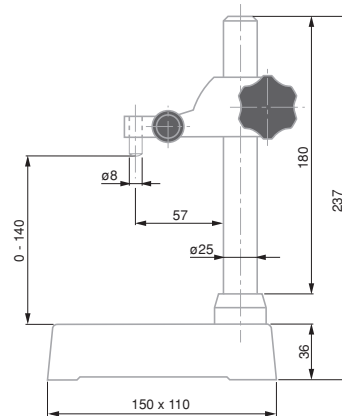
01639004 INTERAPID Measuring Support with Inclined Frontal Arm H = 314 mm

Lever dial test indicators, small dial gauges, precision indicators, probes etc.



## INTERAPID UA 1 Table Measuring Support with Ground Table Surface

Basic model without fine adjustment



01639008	INTERAPID UA 1 measuring support with table	0 ÷ 140	100 x 100



Measuring table: cast iron. Column: chrome-plated steel, Arm: spherical graphite cast iron.



Measuring surface of table: ground. Column: Can be dismantled. Measuring arm with Ø 8 mm clamp.



3 kg



Supplied without measuring instrument



Suitable transport packing

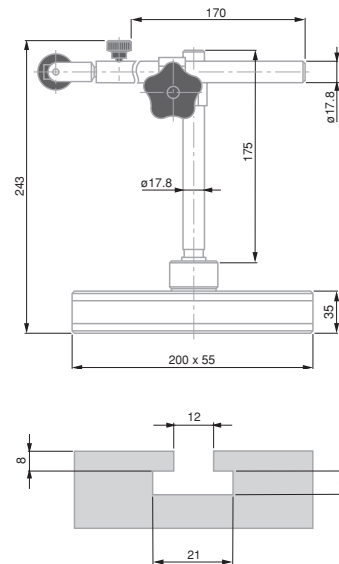


Declaration of conformity

## INTERAPID UD12 Support

Medium sized mobile measuring support for use with ever type dial test indicators, dial gauges, precision indicators, electronic probes etc.

With fine adjustment mechanism.



01639000	UD 12 universal support		
COMPOSÉ DE:			
01840105	Tige de fixation à queue d'aronde Ø 8 mm		
01640100	UDZ 3 Mounting rod and UDZ3 clamp Ø 8 mm clamp for UD 12		



Cast iron base



Stand with lateral guiding faces. T-slot for vertical column. 2 rigid articulations



3.3 kg



Supplied without measuring instrument



Suitable transport packing



Declaration of conformity



## INTERAPID Table Measuring Stands with Granite Grade 00



3 µm in accordance with DIN 876 T1, class 00



01639035: black burnished column with Ø 8 mm clamping bore.

01639029: chrome plated column with thread and threaded ring for adjusting the height of the measuring arm. Ø 8 mm clamping bore. Grooved measuring face.

01639030: Chrome plated column. Tilting measuring arm and joint. Ø 4 mm or 8 mm bore for a dovetail clamp or lug.

01639033: Chrome plated column. Horizontal sliding arm. Ø 4 mm or 8 mm bore for a dovetail clamp or lug.



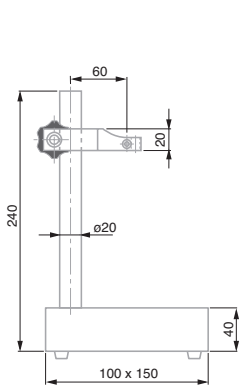
Supplied without measuring instrument



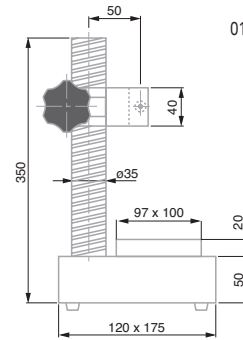
Suitable transport packing



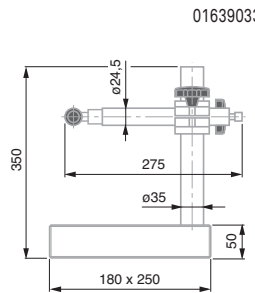
Declaration of conformity



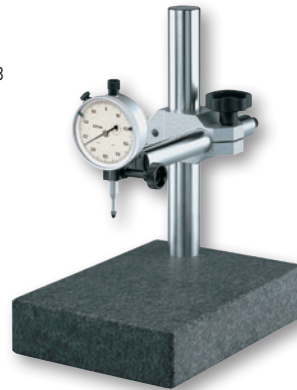
01639035



01639029



01639033



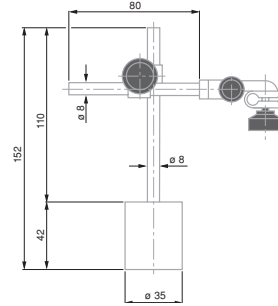
No	=									
		mm	mm	Measuring surface	Fine adjustment	Measuring table mm	Column height mm	Working surface mm	Span mm	kg
01639035	Table measuring support with granite, column Ø 20	0 ÷ 170	20	Granite	–	100 x 150 x 40	200	100 x 115	50,0	2,6
01639029	Slotted table measuring support with granite, threaded column Ø 35	0 ÷ 225	35	Hardened steel	●	120 x 175 x 50	300	100 x 100	68,5	8,1
01639033	Table measuring support with granite, column Ø 35	0 ÷ 260	35	Granite	●	180 x 250 x 50	300	180 x 200	Adjustable	10,5



## SMALL MAGNETIC SUPPORTS

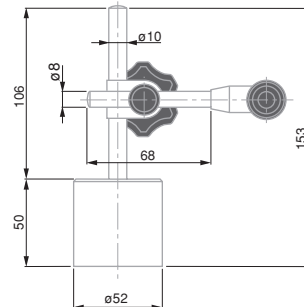
Ideal for lever type dial test indicators, and dial gauges up to 40 mm diameter  
- With 2 articulation joints and fine adjustment.

### UJ 15 Model



01639007 Magnetic support INTERAPID UJ15, dovetail clamp and  $\varnothing 8$  mm cylindrical clamping

### UJ 15G Model



01639016 UJ Magnetic support

### Accessories for Small Magnetic Stands



01640501 Steel base plate for UJ15 or UJ15G that become movable



Holding force on a flat surface:  $\approx 220$  N



Rounded base with permanent magnet



0,47 kg



Supplied without indicator



Packed suitable for shipping



Declaration of conformity



Holding force on a flat surface:  $\geq 350$  N



Rounded base with permanent magnet



0,93 kg



Supplied without indicator



Packed suitable for shipping



Declaration of conformity



50 x 80 x 20 mm



0,60 kg



Cast iron table.  
Chrome plated steel  
column



Suitable transport  
packing



Declaration of  
conformity



Support base:  
Ground measuring  
face. 2 T-slots. Re-  
movable column.



Supplied without  
sensor

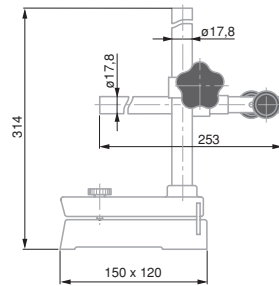


Support base only:  
4,85 kg  
Measuring arm:  
0,85 kg  
Sliding arm: 1,75 kg

## UA 30 MEASURING STAND

Base for mounting special fixtures adapted for series inspection

### INTERAPID UA 30 Measuring Stand, Without Measuring Arm

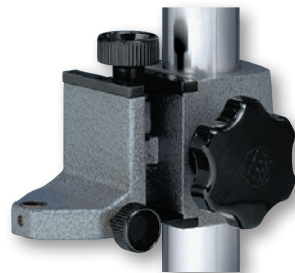


01639009	INTERAPID UA 30 measuring support with table, without measuring arm	0 ÷ 175	0 ÷ 6.89	125 x 115
----------	---	---------	----------	-----------



Measuring arm  
01610200: With  
fine adjustment. 1  
mm travel. Ø 8 mm  
clamping bore.  
Sliding arm  
01610201: Sliding  
holder for TESA  
YA dial gauges.  
Adjustable swinging  
movement. Clamp-  
ing bore Ø 13 mm.  
Length of travel  
35, 57 or 80 mm.  
Measuring span  
60 mm. Depth stop  
plate 01640000:  
Dimensions: 115 x  
35 x 3,5 mm.  
120° vee recess for  
Ø ≤ 120 mm, 2 tight-  
ening screws.

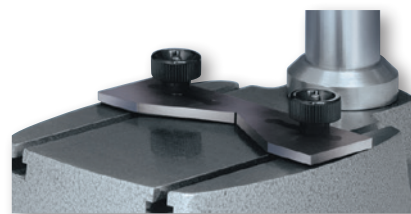
### Accessories for UA 30



01610200



01610201



01640000



01610200	UK 20 measuring arm with fine adjustment for UA30 support
01610201	UK 25 sliding arm. Used with TESA YA for stationary bore measurement on UA30 support
01640000	UAZ 10 depth stop plate for UA 30



## EQUIPEMENT AUXILIAIRES

### INTERAPID Depth Foot with a Flat Face



<b>No</b>	<b>=</b>		
01639046	Depth foot with flat face	mm	mm
		80 x 16	8

### INTERAPID Depth Foot with Prismatic Measuring Face

For measuring the depth of key slots on cylindrical shafts and determining circularity errors etc.



<b>No</b>	<b>=</b>						
01639047	Depth foot with prismatic measuring face	Diameter mm	Diameter in	Width mm	Width in	Clamp mm	Clamp in
		10 ÷ 100	0.39 ÷ 3.9	16	0.64	8	0.315

### Brown & Sharpe CENTER FINDER Centering Tool

Practical for aligning the centre of a bore with respect to the spindle axis of a machine tool

- Without the clamping shaft, it can also serve as small magnetic support
- Allows the clamping of a dial test indicator, either a standard or perpendicular model.



<b>No</b>	<b>=</b>
06769006	B&S CENTER FINDER centering tool



Hardened steel



Lapped measuring faces. Clamp with lock for mounting a dial gauge or probe



Supplied without sensor



Suitable transport packing



Declaration of conformity



Hardened steel



Lapped measuring faces. Clamp with lock for mounting a dial gauge or probe



Supplied without sensor



Suitable transport packing



Declaration of conformity



Center Finder consisting of the following components:

- cylindrical shank for clamping on the chuck of a machine tool.
- powerful round magnetic base with strong holding capacity.
- swivel joint and dovetail collar for clamping a lever-type dial test indicator.



Wooden case



Hardened steel



Ground finish for support and vee faces



Not available as individual components

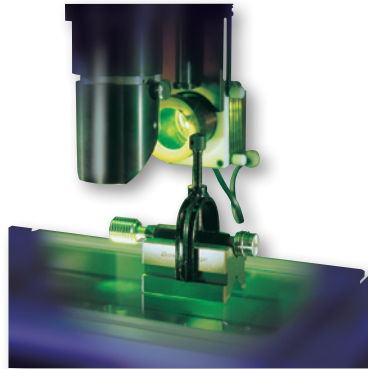


Suitable transport packing

### Brown & Sharpe V-Block Set with Clamping Bridge

V-blocks with frames for clamping cylindrical parts diameters ranging from 0,7 to 40 mm.

Can be used for machining or inspecting workpieces



No	=	∅	∅	Icon	Consisting of:
		Clamping Range, mm	Clamping Range, in		
06769007	Set of B&S V-blocks	0,7 ÷ 40	0.3 ÷ 9/32		1 pair of V-blocks 5 ÷ 40 mm 1 extra V-block 3 ÷ 8 mm 1 extra V-block 1,5 ÷ 5 mm 5 extra V-blocks 0,7 ÷ 3,5 mm 2 in-between bridges 2 large frames 1 small frame



7 µm for each pair



2,5 µm for the 6 faces



Hardened steel, 55 to 60 HRC



Each block has 18 through bores Ø 9,53 mm and 5 bores with M10 threads



Supplied with five M10 socket head screws and one 8 mm socket wrench



Plastic case

### Brown & Sharpe Positioning Block Set

Pair of matched blocks used for positioning and holding workpieces or for use as stops on granite surface plates, a coordinate measuring set-up, a machine-tool or other applications - Each block are precision ground.



No	=	Icon	Icon
		mm	in
06769004	Positioning block set, precision ground	75 x 50 x 25	2.95 x 1.95 x 0.98



## Brown & Sharpe Adjustable Parallels

Set consists of 6 adjustable parallels.

Used as parallel pads, setting standards for measuring instruments or gauges for checking internal dimensions on parallel surfaces.

Each parallel consists of two tapered parts dovetailed together. – Two tightening screws lock the parallels to the size required.

<b>No</b>	<b>=</b>			
<b>06769010</b>	Adjustable parallel set			
Consisting of:				
<b>=</b>	<b>⚙</b>	<b>⚙</b>		
	Height mm	Length mm	Width mm	
1 parallel	10 ÷ 13	44	7	
1 parallel	13 ÷ 17	54	7	
1 parallel	17 ÷ 24	68	7	
1 parallel	24 ÷ 33	90	7	
1 parallel	33 ÷ 44	106	7	
1 parallel	44 ÷ 57	129	7	



Hardened steel



Supplied with a PH 1 screwdriver



Plastic pouch

## ROCH Flexible Rules

In spring stainless steel - Divisions of 1 mm and 0.5 mm.



<b>No</b>	<b>=</b>	<b>⚙</b>	<b>⚙</b>	<b>⚙</b>
		Length mm	Width mm	Thickness mm
<b>0951750181</b>	ROCH flexible rule L = 200 mm			
<b>0951750182</b>	ROCH flexible rule L = 300 mm			
<b>0951750184</b>	ROCH flexible rule L = 500 mm			
<b>0951750187</b>	ROCH flexible rule L = 1000 mm			



Class CE II



Stainless spring-loaded steel



Suitable transport packing



Declaration of conformity

- Length L = 100 mm, Width = 13 mm max.
- Alloyed steel
- Blades not supplied individually
- Plastic pouch
- Declaration of conformity

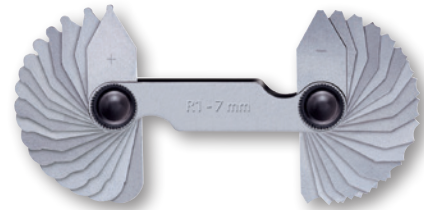
### ROCH Thickness Gauges



No	=				
		Thickness mm	Incrément mm	Thickness in.	Number of blades
0951753013		ROCH thickness gauge with 13 blades, 0,05 to 1,0 mm	0,05 ÷ 0,3 / 0,4 ÷ 1,0	0,05 / 0,1	0.001968 ÷ 0.003937 / 6/7
0951753014		ROCH thickness gauge with 20 blades: 0,05 to 1,0 mm	0,05 ÷ 1,0	0,05	0.001968 ÷ 0.003937 / 20
0951753015		ROCH thickness gauge with 21 blades; 0,1 to 0,2 mm	0,1 ÷ 2,0	0,1 + 1 x 0,05	0.003937 ÷ 0.07874 / 21

### ROCH Radius Gauges

Set of radius gauges with concave and convex blades. Designed for visual inspection of radii.



- Stainless steel
- Blades are not supplied individually
- Plastic pouch
- Declaration of conformity

No	=				
		Radius mm	Radii mm	Incrément mm	Number of blades
0951753001		ROCH Radius Gauge 2 x 17 blades	0,1	1,0 ÷ 2,75 / 3,0 ÷ 7,0	0,25 / 0,5 / 2 x 17
0951753002		ROCH radius gauge 2 x 16 blades	0,15	7,5 ÷ 15,0	0,5 / 2 x 16
0951753003		ROCH radius gauge 2 x 15 blades	0,2	15,5 ÷ 19,5 / 20,0 ÷ 25,0	0,2 / 2 x 15

### ROCH Screw Pitch Gauges

60° flank angles for ISO metric threads or 55° for Whitworth threads.



- Alloyed steel
- Blades are not supplied individually
- Plastic pouch
- Declaration of conformity

No	=			
		Thread pitch mm	Threads per in	Metric thread
0951753045		ROCH screw pitch gauge for ISO 60° threads	0,25 / 0,3 / 0,35 / 0,4 / 0,45 / 0,5 / 0,6 / 0,7 / 0,75 / 0,8 / 0,9 / 1,0 / 1,25 / 1,5 / 1,75 / 2,0 / 2,5 / 3,0 / 3,5 / 4,0 / 4,5 / 5,0 / 5,5 / 6,0	- / ISO 60° mm
0951753046		ROCH screw pitch gauge - Whitworth 55° threads	62 / 60 / 48 / 40 / 36 / 32 / 30 / 28 / 26 / 25 / 24 / 22 / 20 / 19 / 18 / 16 / 14 / 13 / 12 / 11 / 10 / 8 / 7 / 6 / 5 / 4,5 / 4	Whitworth 55° (threads per inch)



## ROCH Portable Magnifier

With a folding handle and additional magnifier. – Retractable support.



Solid resistant plastic



Cardboard box



Declaration of conformity

No	=				
		Large magnifier	Small magnifier	mm	Small magnifier, mm
0951754511	ROCH portable magnifier	3x	10x	80 x 45	13

