



Touch probe
measuring
machines
DeMeet-A7



DeMeet
A7

DeMeet-A7 measuring machine

Our objective was to develop an allround measuring machine for general quality control with a market-matched measuring range.

With an excellent price-performance ratio the DeMeet measuring machines break the barrier for high precision quality control on the production floor as well as in measuring laboratories.

Applications of CNC touch probe measuring are among others in the precision engineering, medical, plastics and electronics industry.

Machine construction

The DeMeet-A7 measuring machine is designed with air bearing guides and a moveable bridge construction.

The construction of the DeMeet-A7 consists of a granite surface plate base with granite X, Y and Z-axis (DIN 876/00).



An integrated air pressure tank controls the air pressure stability in the machine and in case of a loss of the air pressure supply the machine will come to a controlled stop.

The application of quality components from well-known, specialized manufacturers ensures excellent performance and highly accurate measurements.

Product fixtures

Solid positioning of the measuring product is essential for accurate measurements, especially for touch probe measurements. A fixture system can also be used for batch measurements.



Technical specifications

General		
Touch probe system		Renishaw
Work table		mounting hole pattern 33 inserts M8
Drive equipment		DC servo motors / air bearing guides
Operation		motorized joystick control / full CNC control
Construction		surface plate, portal and Z-axis: granite (DIN 876/00)
DeMeet-A7		
Measuring range	(mm)	X=500, Y=715, Z=400
Dimensions	(mm)	w=1182, l=1404, h=2255
Weight	(approx. kg)	1200
Maximum load	(kg)	400
Measuring specifications		
Resolution	(μm)	0.5 (0.1 optional)
Accuracy 0.5 μm model	(μm)	$2.7 + L/300^*$
	(L in mm)	
Accuracy 0.1 μm model	(μm)	$U3 (XYZ) = 1.9 + L/400^*$
	(L in mm)	
Max. velocity	(mm/s)	X,Y=400, Z=300

*The accuracy of the probing system should be taken into account.

Machines with higher specifications and/or modifications are available upon request. Specifications are subject to change without prior notice; for more specifications refer to our website Schut.com.

Touch probe system

Standard a Renishaw TP20 with a 5-way stylus configuration is supplied. In addition to the standard touch probe system, an optional stylus change rack (automatic probe configuration change) or indexing (probe orientation) probe systems can be utilized.

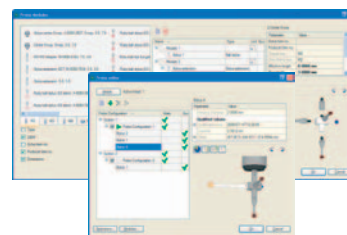
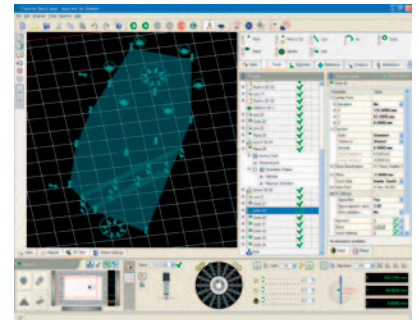


Multi-sensor software

Approve for DeMeet guarantees fast and easy operation to perform your measuring tasks.

Measuring programs are constructed graphically and all settings can be set on a shared basis.

The advanced 3D motor controller makes fast, blended and therefore more accurate moves.



The measuring results are displayed in a 3D view and can be added including settings, like tolerances, by using drag-and-drop to a measuring report or an export.



ISO 9001

Schut Geometrische Meettechniek bv (Schut Geometrical Metrology)

Duinkerkenstraat 21, 9723 BN Groningen

P.O. Box 5225, 9700 GE Groningen

The Netherlands

Tel: +31 (0)50 5 877 877

Fax: +31 (0)50 5 877 899

E-mail: SchutNL@Schut.com

SCHUT.COM