

# BISON - BIAL



FABRYKA PRZYRZĄDÓW I UCHWYTÓW  
15-950 Białystok, 3 Łąkowa Street POLAND

www.bison-bial.pl

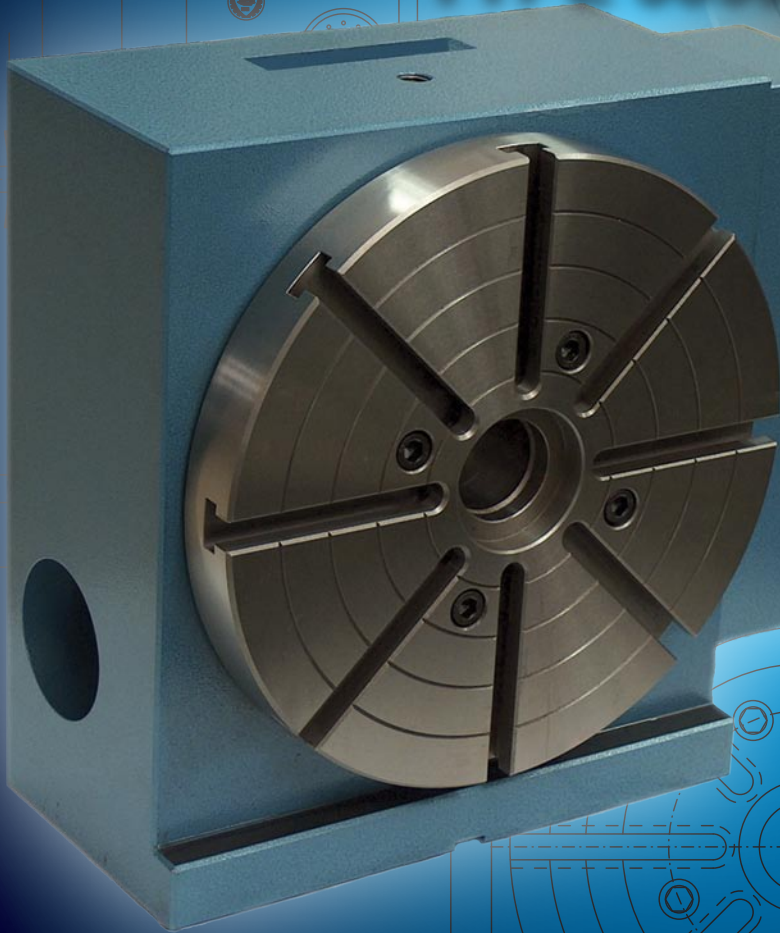
bison-bial@bison-bial.pl

tel. : +48 (85) 732-31-96

fax : +48 (85) 732-76-58

ISO 9001

## CNC ROTARY TABLE TYPE 5859-320-CNC



### TECHNICAL DATA

Indexing Accuracy	- $\pm 30$ "
Repeatability	- 10 "
Diameter of Table	- 320 [ mm ]
Max. Work Load on the Table:	
- Vertical	- 250 [ kg ]
- Horizontal	- 500 [ kg ]
Clamping Torque	- 200 [ Nm ]
Gear Ratio	- 1 : 90
Clamping Air Pressure	- 0,63 [ MPa ]
Parallelism, Perpendicularity of Table to Frame Bottom	- 0,01 / 200 [ mm ]
Table Top Runout	- 0,005 [ mm ]
Net Weight	- 175 [ kg ]

Rigid construction, reliable operation, quality craftsmanship make BISON CNC rotary table as a perfect choice for many indexing operations. Designed to work in vertical and horizontal position. Manufactured of high quality materials according to ISO standards. Rotary table may act as independent machining axis driven with stepping controller for indexing and continuous machining. Rotary table is equipped with pneumatic brake system ensuring superb clamping torque and excellent rigidity in extreme load conditions. The unit may work with other manufacturers driving systems.